

TIMELESS BEAUTY

We live thousand kinds of love every day.
But love for places is the best medicine in the
world.

Franco Arminio

AUTHENTIC INSPIRATION

It is in this microcosm made of culture, of (endless) traditions, of artistic contaminations and continuing innovation that Amura is born, the brand of furniture made in Italy that carries with itself the strong and unique beauty of Southern Italy.

A young company that pursues the creation of timeless design settings with passion and accurate handmade attention, able to combine the memory of origins with the future of design. From the careful materials selection to the innovative design research, every step of the creation brings the permanent mark of the most genuine Southern atmosphere.





CONTEMPORAY (R)EVOLUTION

Our design concept aims to represent the community's future, present and past. It is not only an answer to a need, but the attempt to transform aspiration and desires, just as music, philosophy and figurative art reflect the evolution of our contemporaneity.

OUR ORIGINS, OUR FUTURE.

Warm southern colours blend elegantly with deep blue sky above Altamura. Walking through the tangled maze of small and stony streets, we can smell the fresh baked bread that mixes with the background noises of the many artisan workshops.

It is a place to be felt with an open heart, a vigorous land with a sincere and authentic beauty. It is not a place of the past, but a space that invites to put the perspective upside down. To create a new future.



Desco table and **bench** designed by *Anton Cristell & Emanuel Gargano*.



LABOUR

In Amura's world, craftsmanship has always kept a central role. It is no surprise as the territory we were born into has always been a proper artisanal wisdom mine, an asset of experience and culture to be protected and enhanced.

And this is the secret of Amura: an absolute merger between contemporary design, technology and manufacturing quality that brings into the homes all over the world not only great value furniture, but also and above all, the universe of values in which they are generated.





Lapis sofa designed by *Anton Cristell & Emanuel Gargano*,
Junsei coffee table designed by *Studio Monti*

A NEW INTERPRETATION OF RELAXING EXPERIENCE

It is the earth itself, where the original concept and shapes of the design elements come from: the volume, softness, flow, continuity of time, emerge naturally from ancient stone pavements. LAPIS can take different sizes and combinations according to the needs of the space: from the most classic and traditional shapes to irregular free form combinations.



Sistema Parere bookcase designed by *Anton Cristell & Emanuel Gargano*



Lapis sofa designed by *Anton Cristell & Emanuel Gargano*

SOFT SHAPES

The iconic image of the large loaves of bread, an authentic local cult favorite, becomes a source of inspiration for a line of upholstery with generous, soft shapes that can be made in all possible configurations.



Panis sofa designed by *Anton Cristell & Emanuel Gargano*, **Frame** coffee table designed by *Studio Monti*



TIMELESS BEAUTY

A more complex sofa, with a deeper interpretation of function. It has four modular elements, in which the design can become several compositions. "Palmo" can take different sizes and combinations according to the needs of the space: from the most classic and traditional shapes, to the irregular and unconventional, beginning with the enveloping softness of the padding and folds in the covering, wrapping itself, imagining the concept of "Welcome". An explicit reference to the concept of welcoming people into the intimacy of their own home.



Palmo coffee table designed by *Emanuel Gargano*

Palmo sofa designed by *Emanuel Gargano*



Desco table and bench designed by *Anton Cristell & Emanuel Gargano*



TIMELESS DESIGN

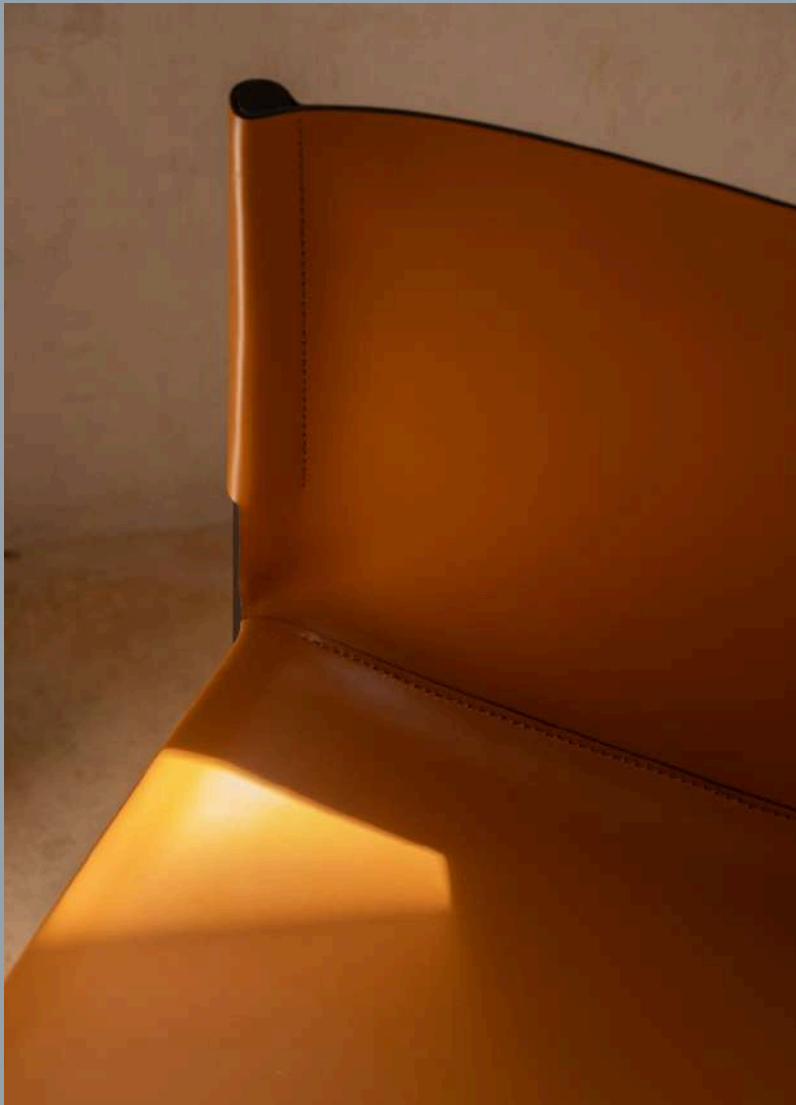
"A daring furniture element, with a unique scenic effect " Table made in multiply with a 1 cm. veneer of antique reclaimed oak, aged between 80 and 350 years, left in a raw state, ancient, where veins, cracks, knots and imperfections become the specific and characterizing feature of this table. At a first glance, the table conveys values such as: tradition, craftsmanship and authenticity, words which are in keeping with Amura brand.



Desco table designed by *Anton Cristell & Emanuel Gargano*
Stilt chair designed by *Stefano Grassi*

ESSENTIAL LINES

Its solid wood structure reminds the ancient homes' architecture and inspires its own name, while it supports the backrest and seat in cuoio. The minimalist design does not hide the meticulous research and the attention to detail that is visible from the refined cuoio sections and from the premium quality manufacturing. With an embracing timeless character, Stilt Chair is the star of any design dedicated setting.



Stilt chair designed by *Stefano Grassi*



BALANCED SHAPES

Its solid wood structure reminds the ancient homes' architecture and inspires its own name, while it supports the a marble, wood or glass top. It is possible even add other under top.



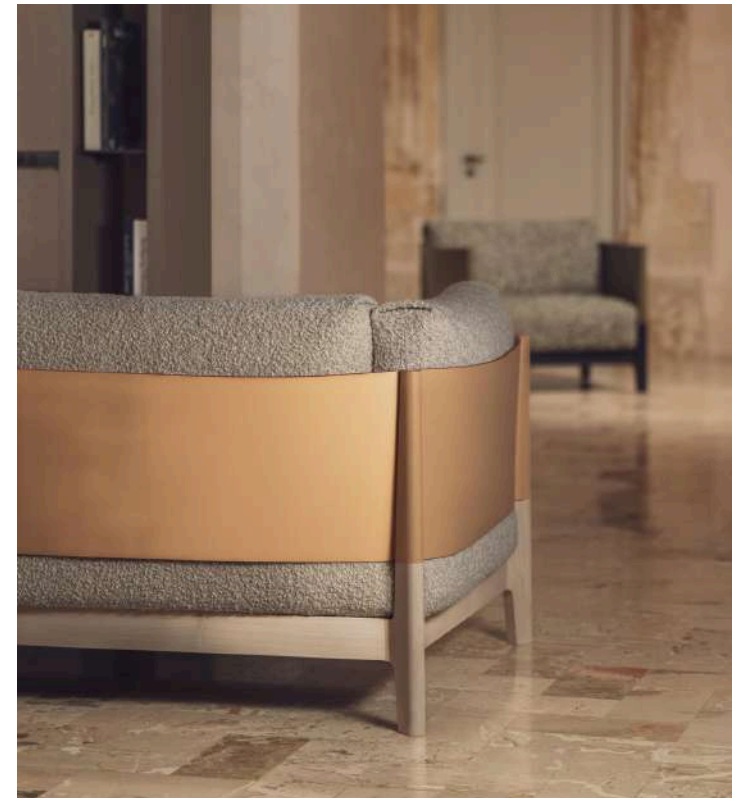
Stilt table and chair designed by *Stefano Grassi*

METICULOUS RESEARCH

The structure supporting the soft padding of backrests, seats, and armrests. The minimalist design combined with meticulous research and the attention to detail visible from the refined cuoio sections, and from the premium quality manufacturing. Soft, wide, spacious, the STILT sofa is a system embracing various timeless versions by its designer Stefano Grassi. It's unique character makes it the absolute star of any relaxing dedicated setting.



Stilt sofa designed by *Stefano Grassi*



GREAT VERSATILITY

"The leather robe, stretched on the ground, like the long sleeves of a kimono" KIMONO is an elegant armchair made up of two elements: a tubular metal structure and a leather cover. The Kimono original personality lies in the essential design, in the cover craftsmanship and in the charm of a handmade product.

The tubular metal draws the structure, the cuoio dresses it, hiding some parts and showing others: defines the seat and the back, rests on the armrests and falls, stretched on the ground, like the long sleeves of a kimono.



Stilt sofa designed by *Stefano Grassi*





Ease designed by *Gareth Neal*



ARTISAN WISDOM

Natural materials such as cuoio and wood are shaped with Artisan wisdom and attention to detail to give life to real unique pieces. EASE is an armchair of great personality, with an original and innovative design: solid oak structure (proposed in natural oak or dark oak), suspensions, seat and back in cuoio. Perfect companion for relaxing moments, EASE combines comfort and aesthetics and becomes the star of the living room with its discreet elegance.

GEOMETRY AND STRICTNESS

In Eresia volumes alternate in a balanced play of proportions. Cubes and parallelepipeds are spaced out with openings in a playful succession of "empty" and "full".

Extremely modular and sectional, Eresia fits perfectly in any environment, from the office to the living area: a piece of furniture of extreme rationality that can be also used to separate two different home environments. Structure in lacquered metal, in the RAL colors available in the collection. Optional boxes in natural cuoio in the colors available in collection.



Eresia bookcase designed by *Anton Cristell & Emanuel Gargano*

LIKE A PETAL

"Blooms like a fleshy flower designed with essential lines" It is the softness that characterizes NOA, so full and flourishing to recall the very concept of comfort. The curvy lines of the ergonomic backrest are soft, seemingly delicate like a petal, actually solid shell capable of welcoming the important dimensions of the seat and giving stability to the entire structure.

What takes shape in NOA, it is a game of joints and volumes, of voids and solids, which translates into an irresistible invitation to sit. With a strong personality It is able to adapt to any type of environment, from the living room to the bedroom, to the lounge.



Noa designed by Stefano Bigi



Vienna designed by *Quaglio&Simonelli*



SOFT DETAIL

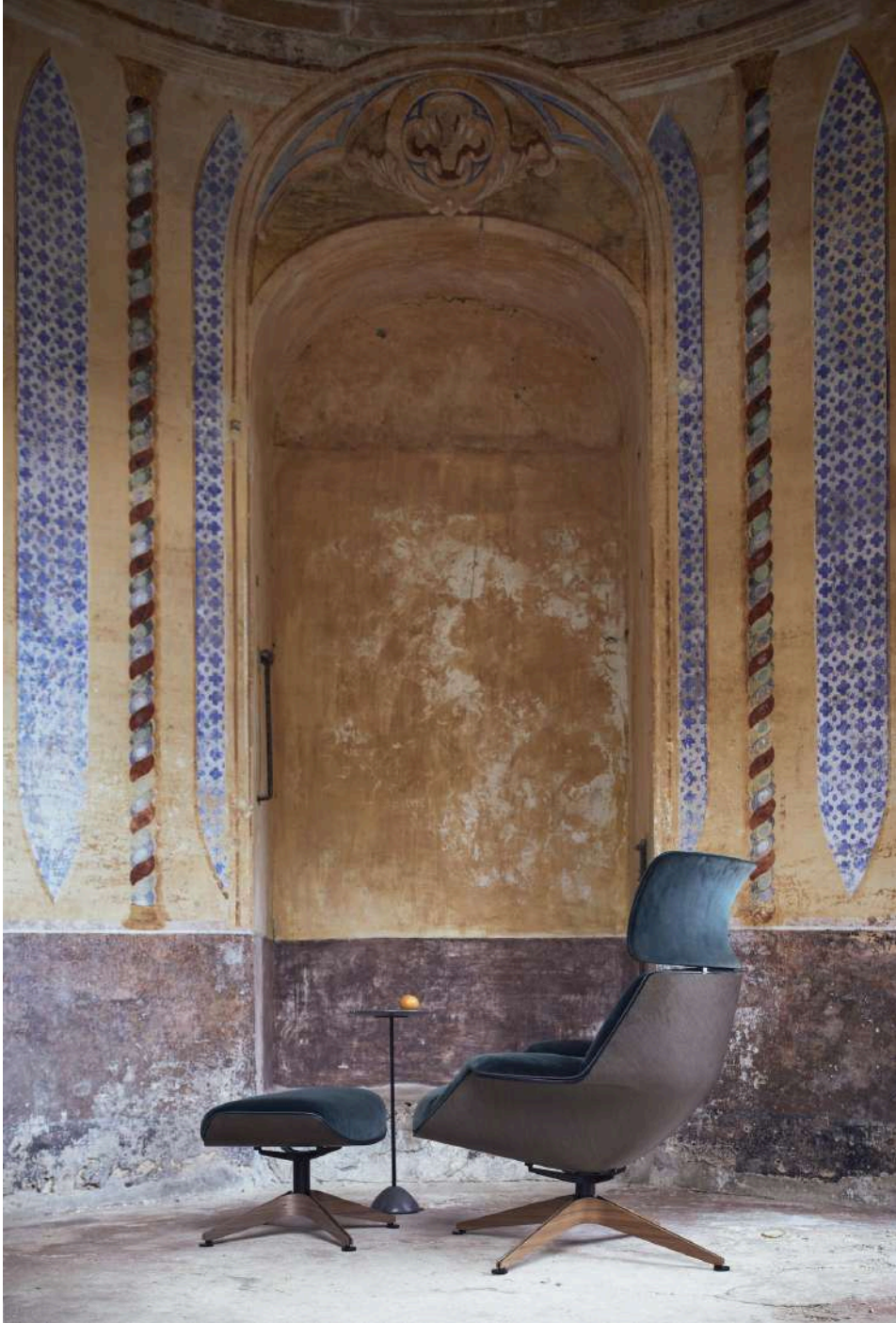
Vienna reinterprets the classic tubular metal chairs. The leather treatment enriches it with precious, functional and aesthetic details at the same time, that reminds of the leather goods universe. A belt supports the backrest, attaching to the armrests, while a soft detail is drawn by the leather that falls on the front of the seat, allowing you to hide the reinforcing cross bar.

LIGHTNESS AND SOLIDITY

The formal simplicity of the lines that intersect, creating minimal countertops, and the importance of the materials chosen also get in contrast one other: metal plate for the base and marble or wood for the top. Exilis is a collection of tables with a strong personality that fits into any type of living thanks to the ability to assume different aspects from time to time depending on the finishes chosen.



Exilis designed by *Amura*



Coach designed by Jean-Marie Massaud

A NEW CLASSIC

The lightweight and incredibly strong linen fiber composite shell hugs the seat and wide back like a shell, offering durability and a truly ergonomic seat. The perfect combination of technology and craftsmanship.



AMURA FROM THE WORLD

Projects, collaborations, case studies.

In an increasingly interconnected world, it is no longer enough to create functional spaces: our mission is to develop interiors that enhance our senses and generate real emotions.

CONTRASTE RESTAURANT *PARIS*



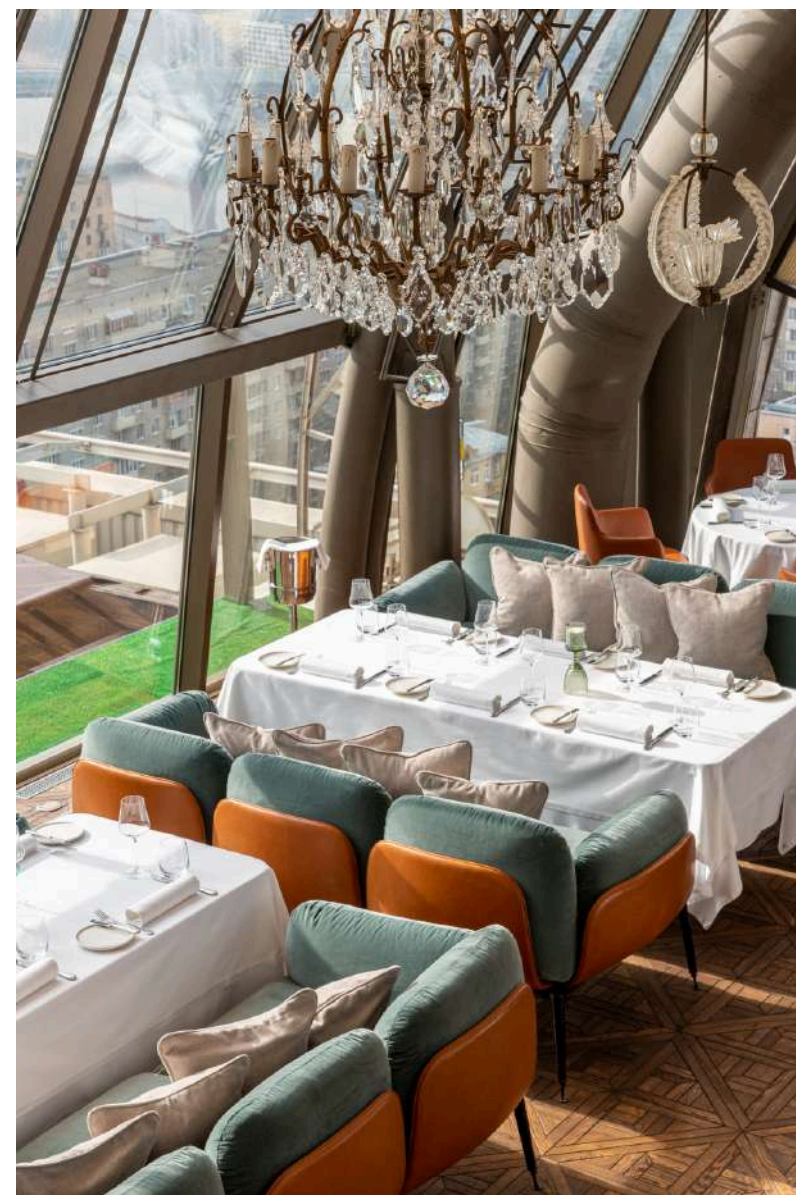


PRIVATE VILLA SALONICA *TORONTO*

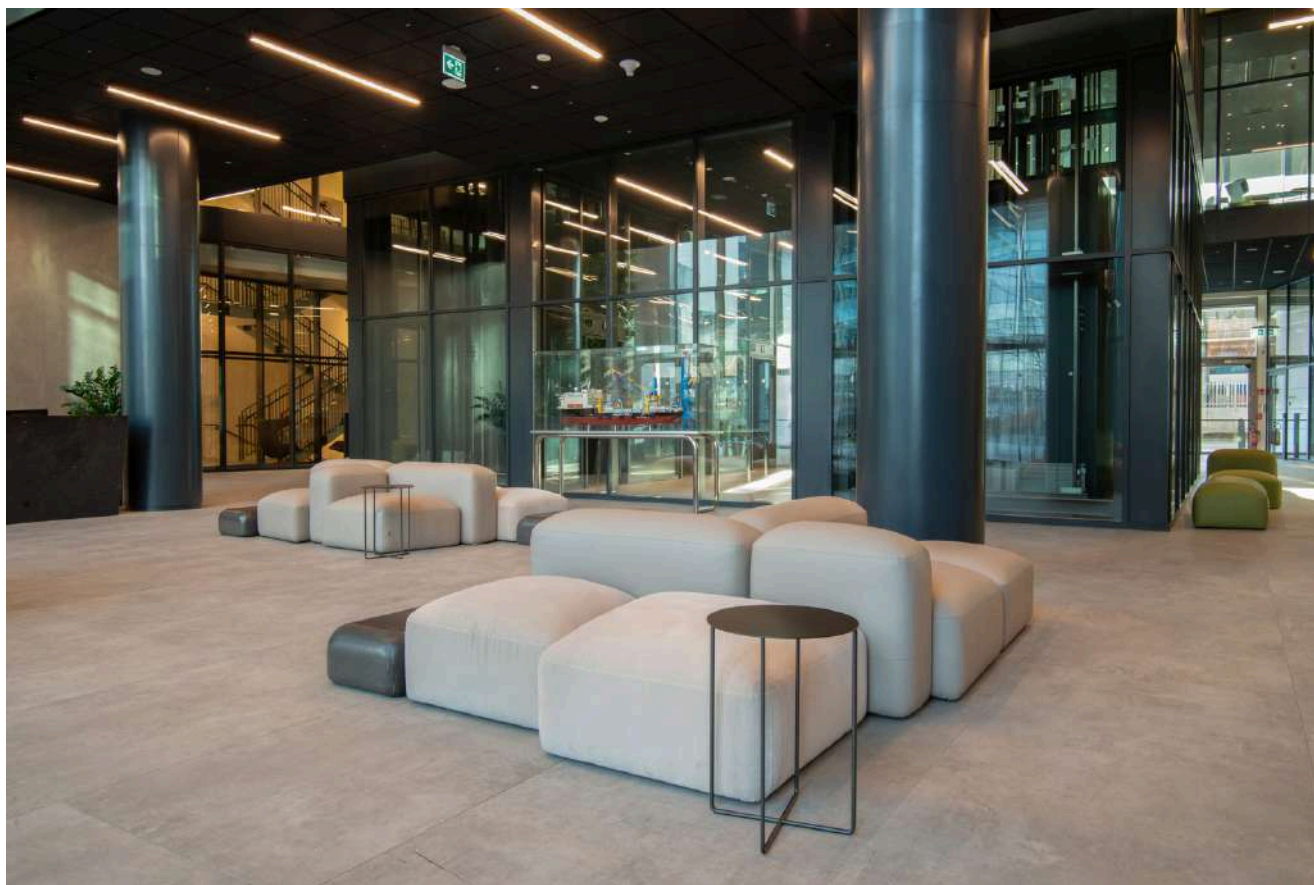




WHITE RABBIT RESTAURANT MOSCOW



SAIPEM MILANO



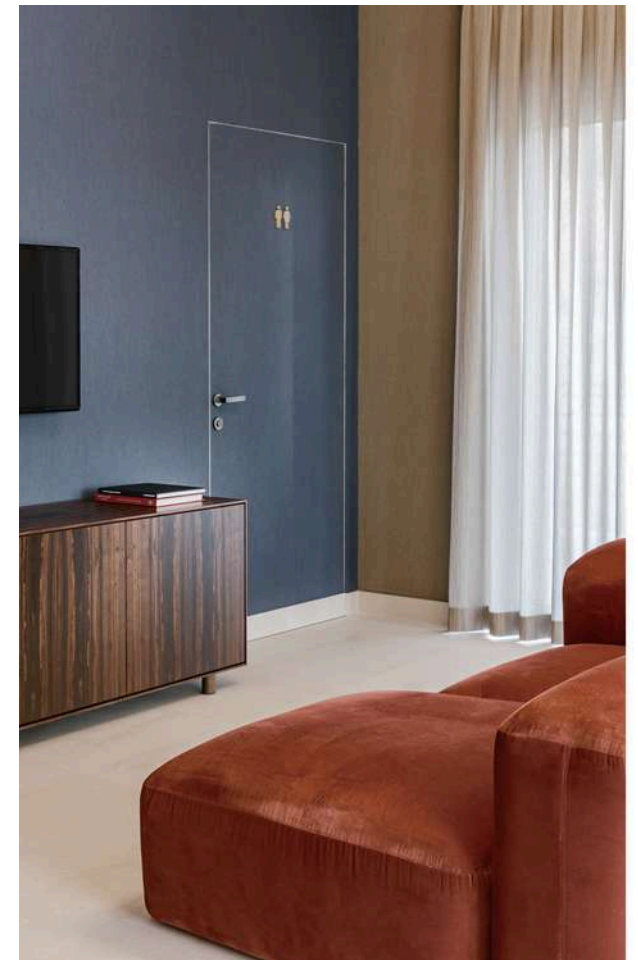
SAIPEM MILANO



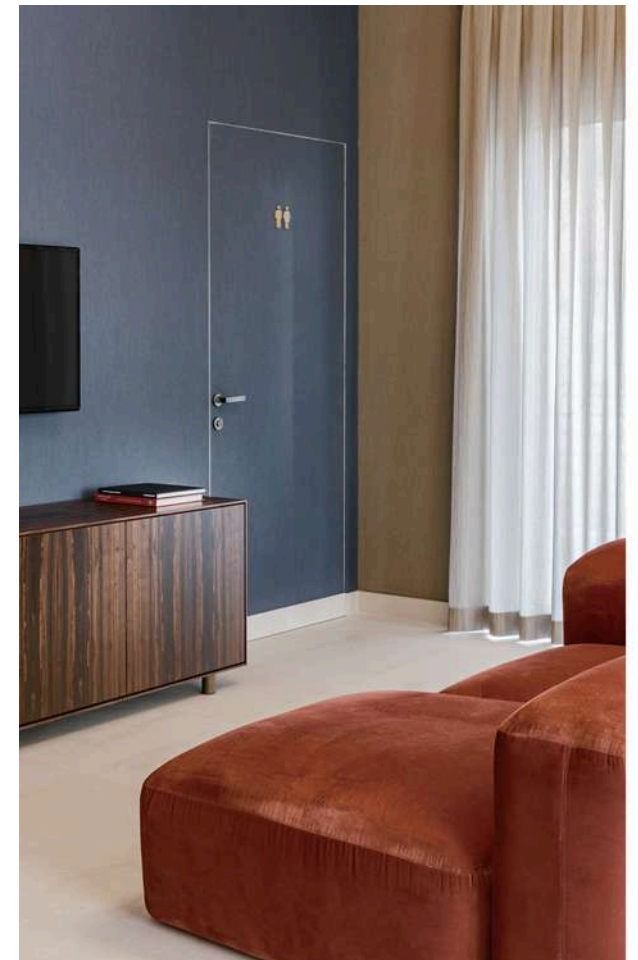
PRIVATE HOME GRAVINA IN PUGLIA



HOTEL DIMORA DEL MONACO *MATERA*



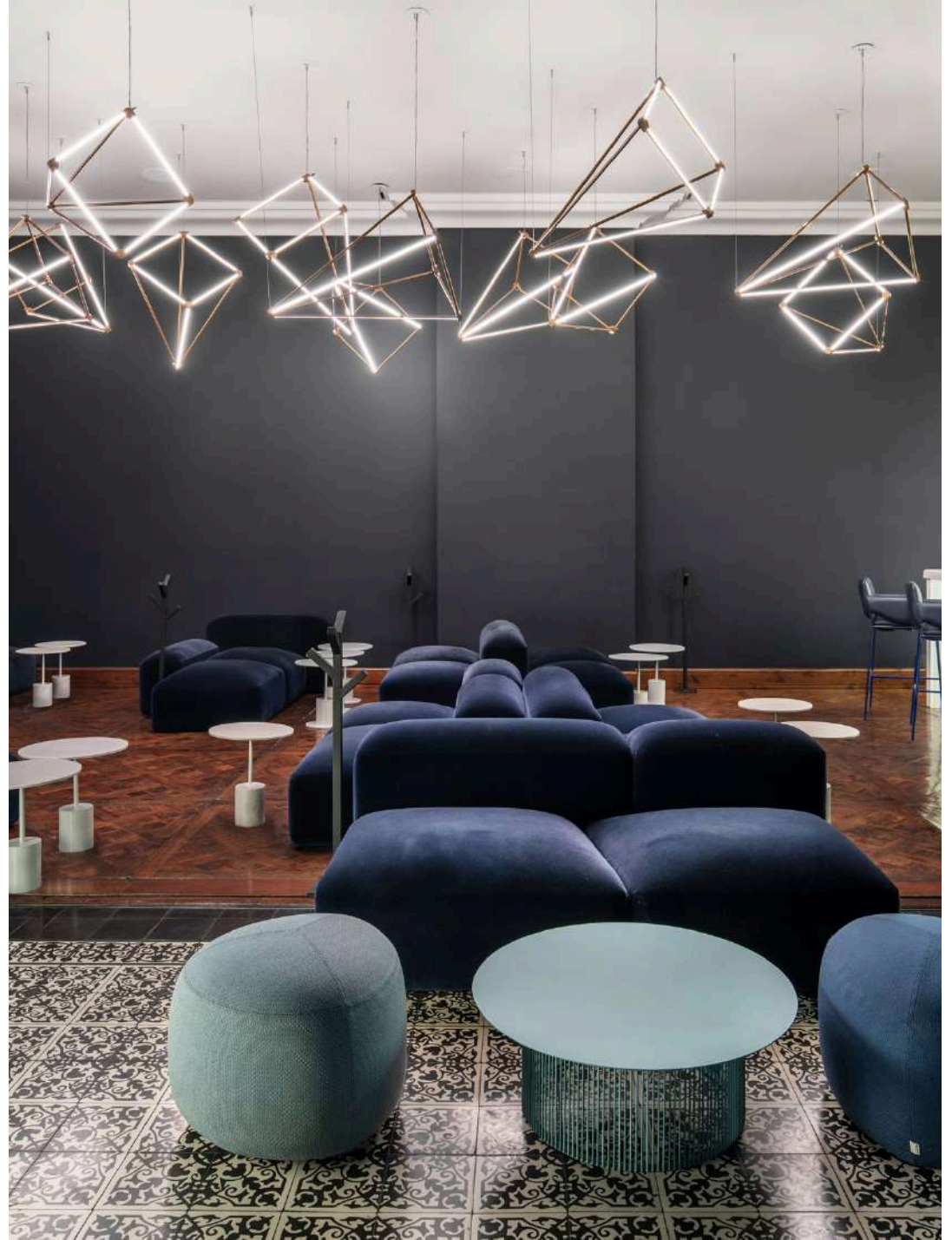
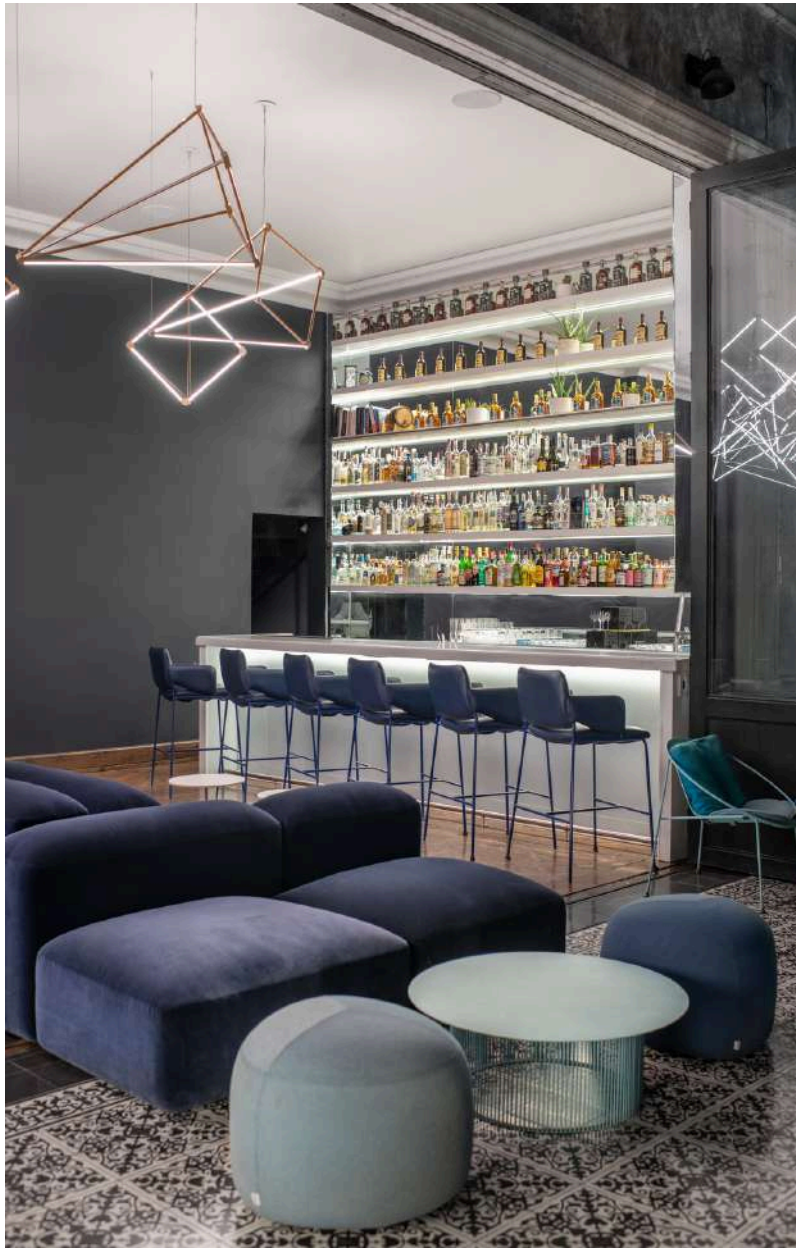
HOTEL DIMORA DEL MONACO *MATERA*



COOLEY
PROJECT
NEW YORK



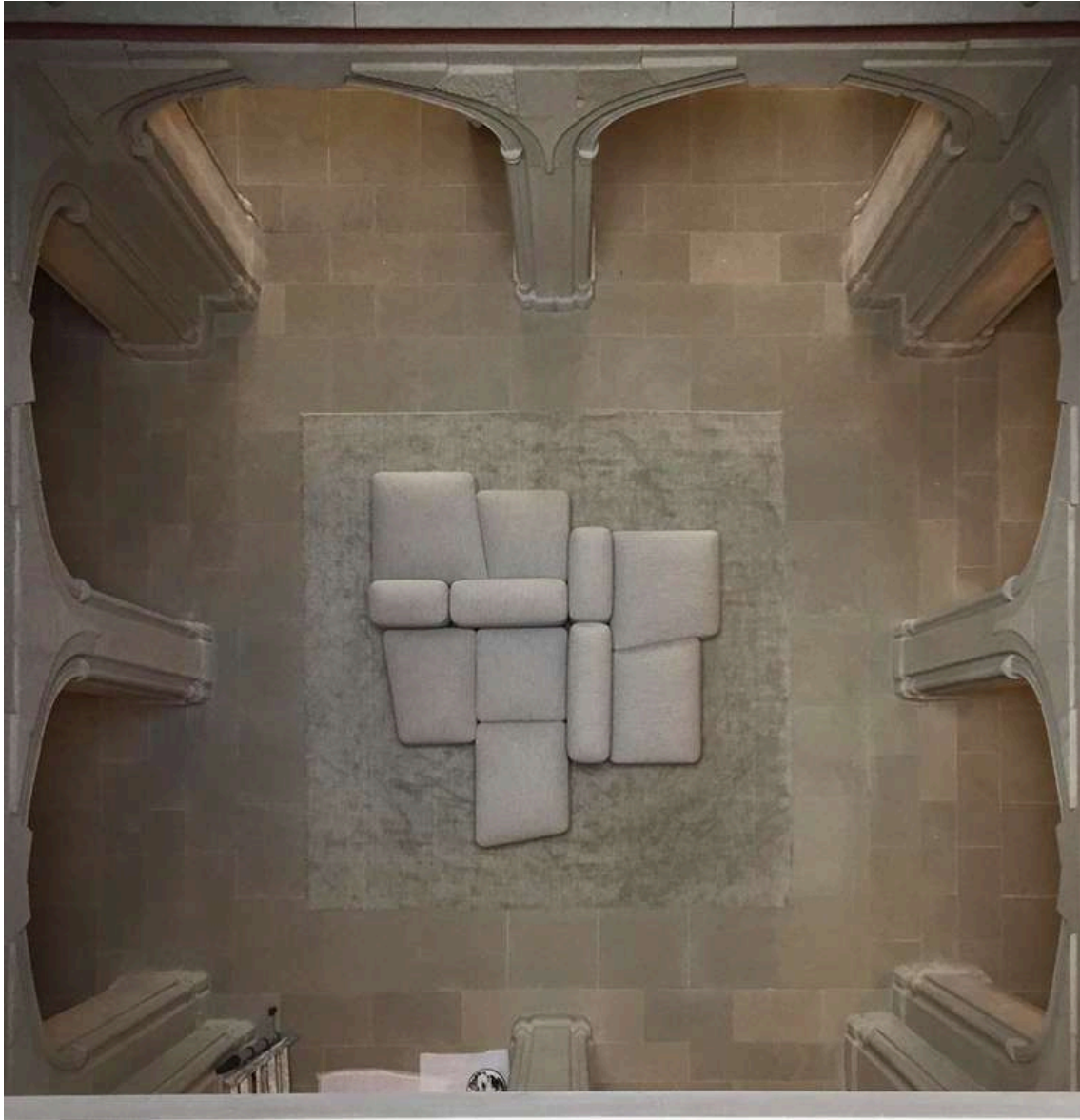
RAYO COCKTAIL BAR MEXICO CITY



PRIVATE RESIDENCE
NEW YORK



PRIVATE RESIDENCE SWISS



SUPERBLUE MUSEUM
MIAMI



PRIVATE RESIDENCE
MILL VALLEY



PRIVATE RESIDENCE
NEW YORK



Amura

N.E.W.S. SRL
SS 96 KM 96+800
70025 Grumo Appula(BA)

t +39 080.618.01.21
f +39 080.214.06.86
e info@amuralab.com

www.amuralab.com